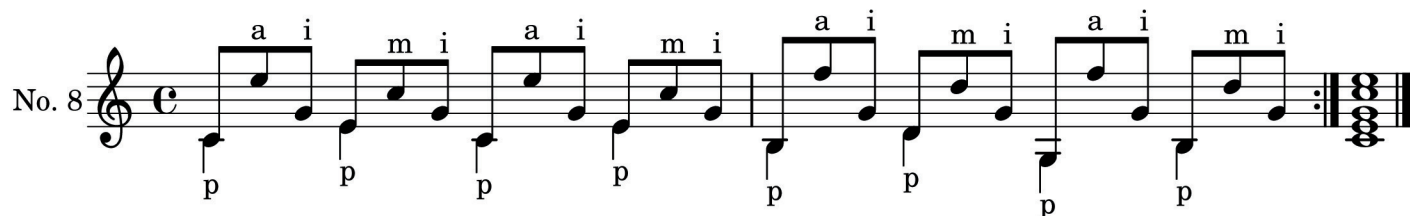
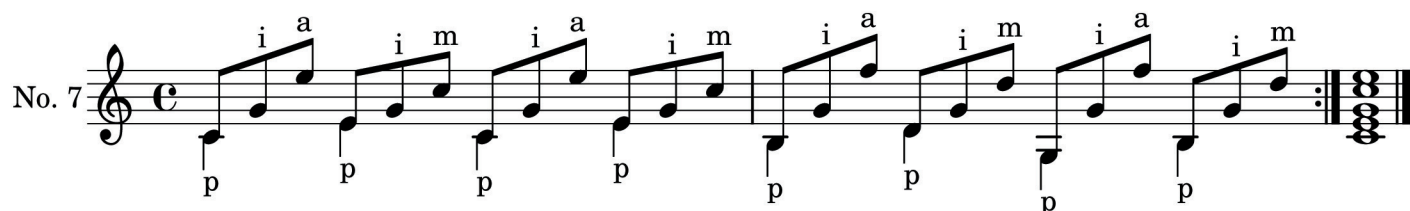
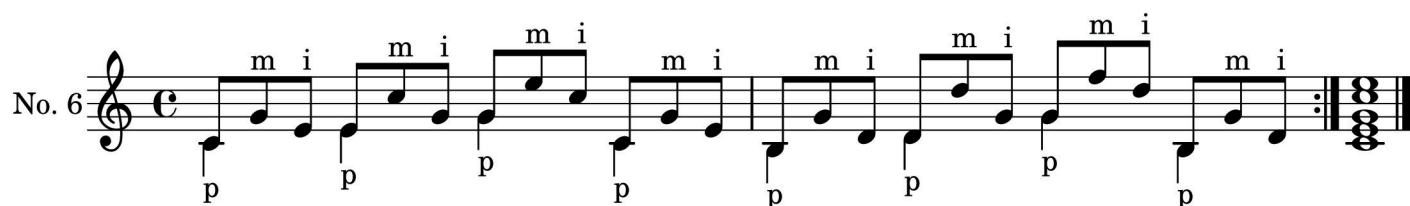
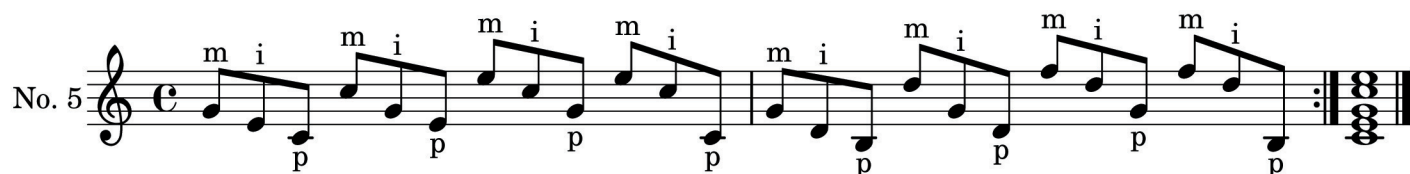
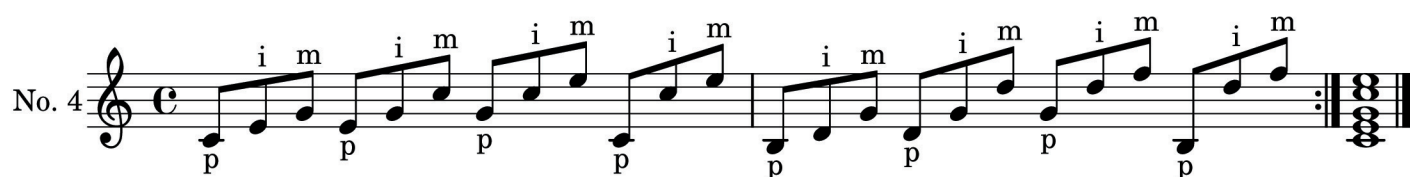
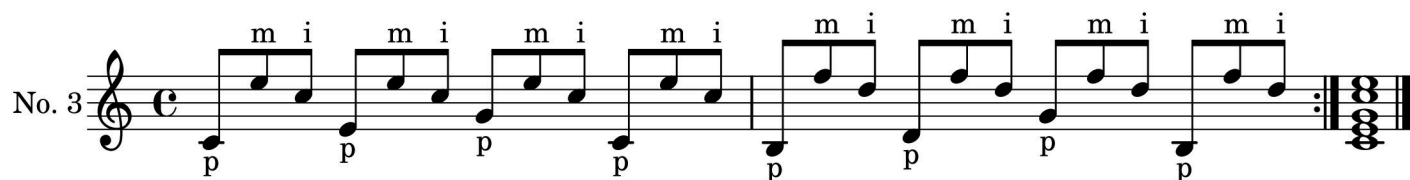
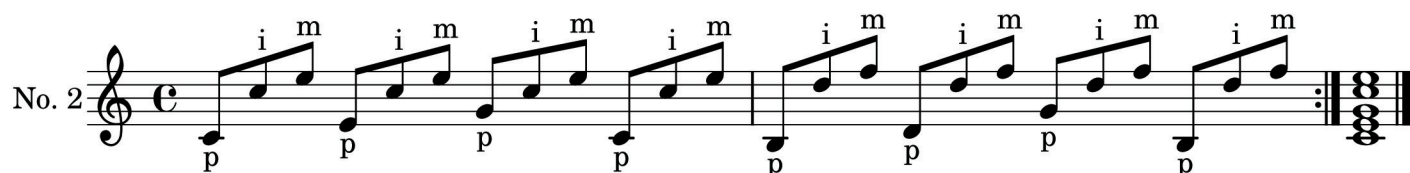
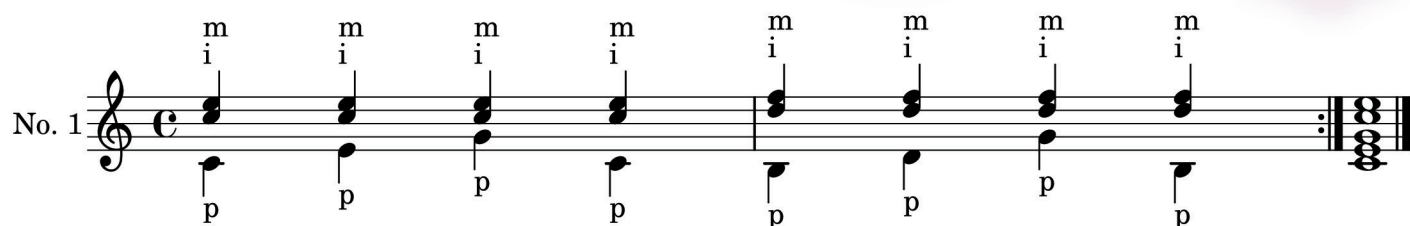
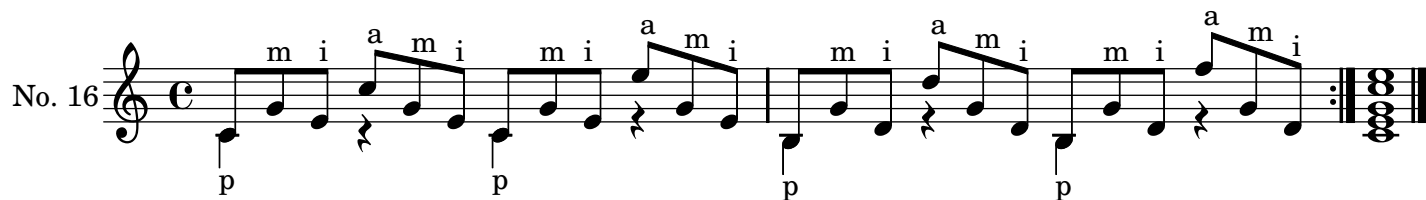
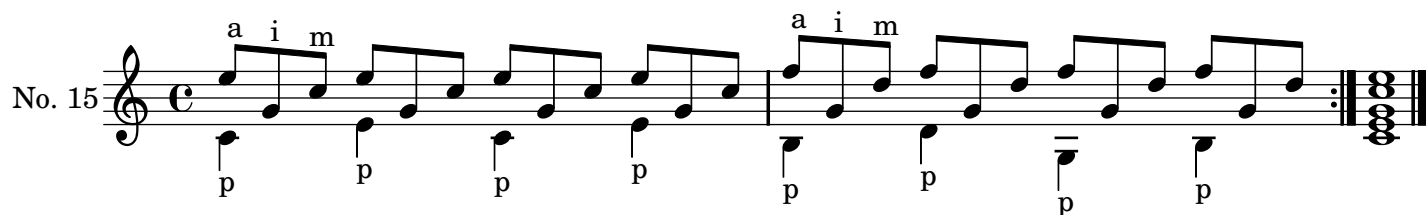
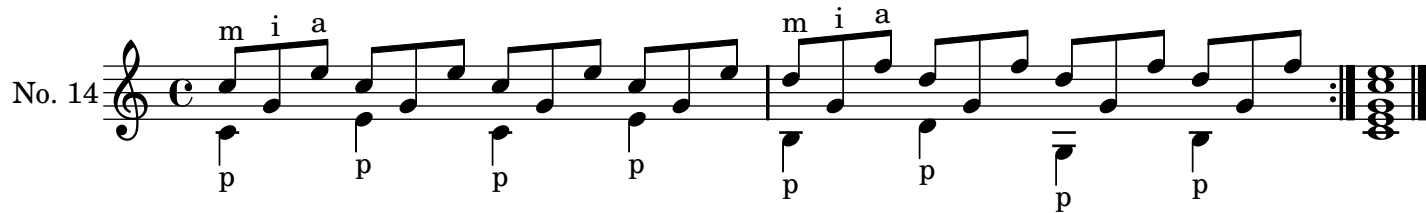
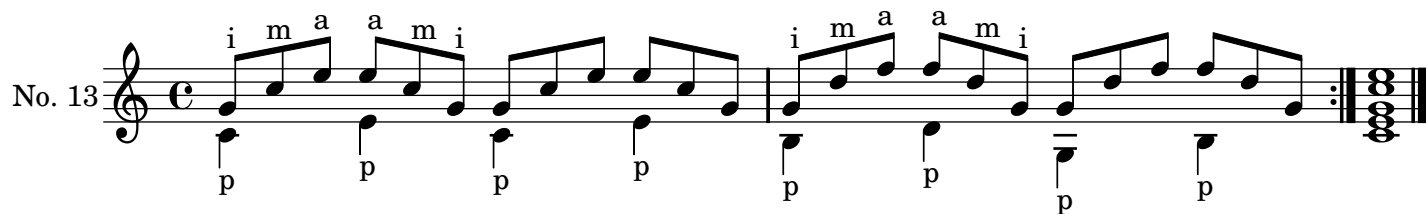
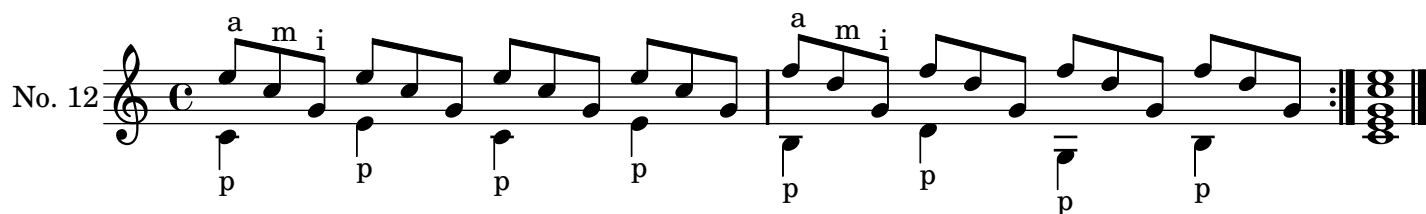
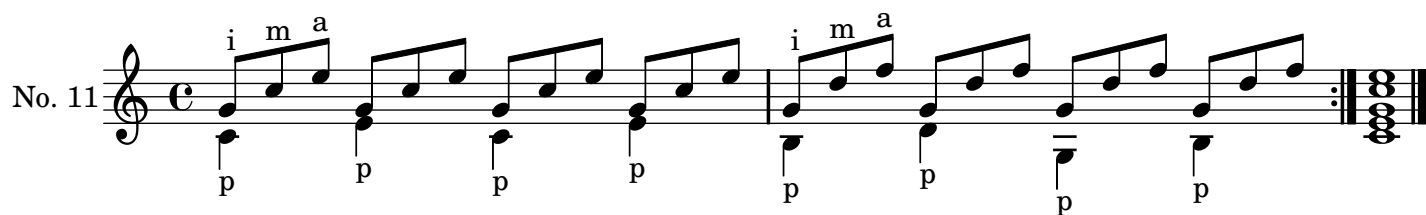
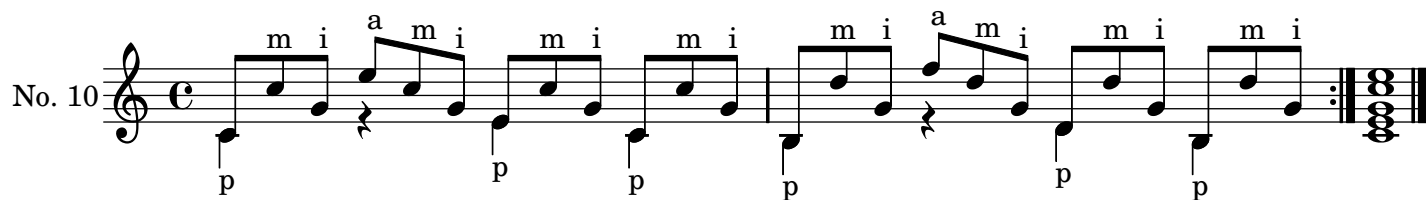
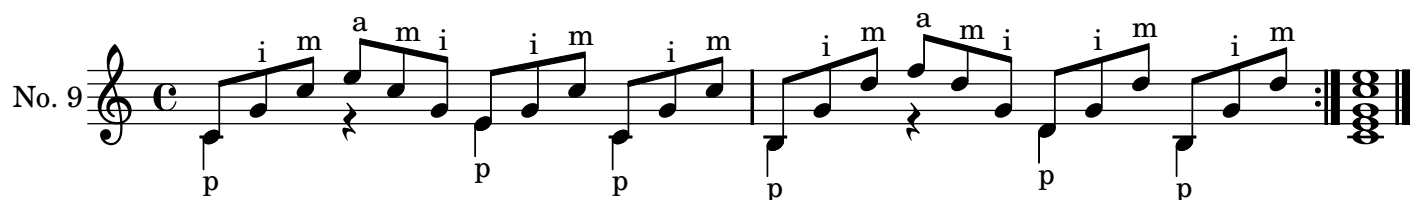


120 ЭТЮДОВ ДЛЯ РАЗВИТИЯ ТЕХНИКИ ПРАВОЙ РУКИ

Мауро Джулиани





No. 17

Handwritten musical score for No. 17, a single-measure exercise in C major, 2/4 time. The melody consists of eighth notes: C4, D4, E4, F4, G4, A4, B4, C5, B4, A4, G4, F4, E4, D4, C4. The bass line consists of eighth notes: C3, D3, E3, F3, G3, A3, B3, C4, B3, A3, G3, F3, E3, D3, C3. The piece ends with a double bar line and repeat dots.

No. 18

The musical score for No. 18 is a single-measure rest in C major. It is written on a single staff with a treble clef and a common time signature (C). The rest is a whole note, indicated by a vertical line with a horizontal bar at the top. The key signature is one sharp (F#), and the time signature is common time (C). The rest is labeled with 'a' and 'm' above it, and 'p p i' below it. The score ends with a double bar line and a repeat sign.

No. 19

a m

a m

p p i

p p i

No. 20

musical score for No. 20, a short piece in C major. The score is written on a single staff in treble clef. It begins with a treble clef, a C-clef, and a common time signature. The first measure contains a half note C (piano), a half note D (piano), and a half note E (piano). The second measure contains a half note F (piano), a half note G (piano), and a half note A (piano). The third measure contains a half note B (piano), a half note C (piano), and a half note D (piano). The fourth measure contains a half note E (piano), a half note F (piano), and a half note G (piano). The fifth measure contains a half note A (piano), a half note B (piano), and a half note C (piano). The sixth measure contains a half note D (piano), a half note E (piano), and a half note F (piano). The seventh measure contains a half note G (piano), a half note A (piano), and a half note B (piano). The eighth measure contains a half note C (piano), a half note D (piano), and a half note E (piano). The piece ends with a double bar line and repeat dots.

No. 21

a a
m m

p p i

a a
m m

p p i

No. 22

musical score for No. 22, a piece for piano. The score is written on a single staff in C major, 2/4 time. It begins with a treble clef and a common time signature 'C'. The first measure contains a piano (p) dynamic marking and a half note chord of C4 and E4. The second measure contains a piano (p) dynamic marking and a half note chord of G4 and B4. The third measure contains a piano (p) dynamic marking and a half note chord of C5 and E5. The fourth measure contains a piano (p) dynamic marking and a half note chord of G5 and B5. The fifth measure contains a piano (p) dynamic marking and a half note chord of C6 and E6. The sixth measure contains a piano (p) dynamic marking and a half note chord of G6 and B6. The seventh measure contains a piano (p) dynamic marking and a half note chord of C7 and E7. The eighth measure contains a piano (p) dynamic marking and a half note chord of G7 and B7. The ninth measure contains a piano (p) dynamic marking and a half note chord of C8 and E8. The tenth measure contains a piano (p) dynamic marking and a half note chord of G8 and B8. The eleventh measure contains a piano (p) dynamic marking and a half note chord of C9 and E9. The twelfth measure contains a piano (p) dynamic marking and a half note chord of G9 and B9. The thirteenth measure contains a piano (p) dynamic marking and a half note chord of C10 and E10. The fourteenth measure contains a piano (p) dynamic marking and a half note chord of G10 and B10. The fifteenth measure contains a piano (p) dynamic marking and a half note chord of C11 and E11. The sixteenth measure contains a piano (p) dynamic marking and a half note chord of G11 and B11. The seventeenth measure contains a piano (p) dynamic marking and a half note chord of C12 and E12. The eighteenth measure contains a piano (p) dynamic marking and a half note chord of G12 and B12. The nineteenth measure contains a piano (p) dynamic marking and a half note chord of C13 and E13. The twentieth measure contains a piano (p) dynamic marking and a half note chord of G13 and B13. The score ends with a double bar line and repeat signs.

No. 23

a m a m p p i p p i p p i p p i p p i p p i p p i p p i p p i

No. 24

Diagram 10.10: Single-measure rest exercise.

No. 25

Handwritten musical score for No. 25, a single-measure exercise in C major, 2/4 time. The melody consists of eighth-note patterns. The first four measures are: G4-A4-B4, A4-G4-F#4, E4-F#4-G4, and D4-E4-F#4. The fifth measure is a repeat sign. The sixth and seventh measures are: G4-A4-B4, A4-G4-F#4, and E4-F#4-G4. The eighth measure is a repeat sign. The piece ends with a double bar line and repeat dots.

No. 26

mim i mim i

mim i mim i

p p p p

No. 27

i imi mimam

i imi mimam

p p p p

No. 28

ia imi ia imi

ia imi ia imi

p p p p

No. 29

imia i imia i

imia i imia i

p p p p

No. 30

i mia a im i

i mia a im i

p p p p

No. 31

i ma mi i ma mi

i ma mi i ma mi

p p p p

No. 32

a mi ma a mi ma

a mi ma a mi ma

p p p p

No. 33

ia im ia im

ia im ia im

p p p p

No. 34

i i ma i i ma

i i ma i i ma

p p p p

No. 35

The musical score for No. 35 is a single-measure rest in C major. The notation is a single horizontal line with a vertical bar and a diagonal slash, indicating a whole rest. The key signature is one sharp (F#) and the time signature is 4/4.

No. 36



p i p i

No. 37



p i p i m m

No. 38

The musical score for No. 38 is a single-measure rest in C major. It is written on a single staff with a treble clef and a common time signature (C). The rest is marked with a 'p' (piano) and an 'i' (italic) below it, indicating a soft and expressive performance. The rest is marked with a 'm' (mezzo) above it, indicating a half-measure rest. The score ends with a repeat sign and a double bar line.

No. 39

p i p i

p i p i

No. 40

m m

p i p i

m m

p i p i

No. 41

m m

p i p i

m m

p i p i

No. 42

The musical score for No. 42 is a single-measure rest in C major. It is written on a single staff with a treble clef and a common time signature (C). The melody consists of a series of eighth notes: C4, D4, E4, F4, G4, A4, B4, C5, B4, A4, G4, F4, E4, D4, C4. The notes are grouped into four measures, each containing four eighth notes. The first measure is marked with a 'p' (piano) and the second with an 'i' (accrescendo). The third measure is marked with a 'p' and the fourth with an 'i'. The piece ends with a double bar line and a repeat sign.

No. 43



m m

p i p i

m m

p i p i

No. 44

m m
p i p i

No. 45

m m
p i p i

No. 46

m m m
p i p i

No. 47

m m m
p i p i

No. 48

m m m
p i p i

No. 49

m m m
p i p i

No. 50

m m m m
p i p i

No. 51

m i
p p p p p p p p

No. 52

m i
p p p p p p p p

No. 53

Handwritten musical notation for exercise No. 53. It is in treble clef, common time (C), and consists of 8 measures. The first four measures have a half note 'm' above and a half note 'i' below. The next four measures have a half note 'm' above and a half note 'i' below. The final measure has a half note 'm' above and a half note 'i' below. The piece ends with a double bar line and repeat signs.

No. 54

Handwritten musical notation for exercise No. 54. It is in treble clef, common time (C), and consists of 8 measures. The first four measures have a half note 'm' above and a half note 'i' below. The next four measures have a half note 'm' above and a half note 'i' below. The final measure has a half note 'm' above and a half note 'i' below. The piece ends with a double bar line and repeat signs.

No. 55

Handwritten musical notation for exercise No. 55. It is in treble clef, common time (C), and consists of 8 measures. The first four measures have a half note 'm' above and a half note 'i' below. The next four measures have a half note 'm' above and a half note 'i' below. The final measure has a half note 'm' above and a half note 'i' below. The piece ends with a double bar line and repeat signs.

No. 56

Handwritten musical notation for exercise No. 56. It is in treble clef, common time (C), and consists of 8 measures. The first four measures have a half note 'm' above and a half note 'i' below. The next four measures have a half note 'm' above and a half note 'i' below. The final measure has a half note 'm' above and a half note 'i' below. The piece ends with a double bar line and repeat signs.

No. 57

Handwritten musical notation for exercise No. 57. It is in treble clef, common time (C), and consists of 8 measures. The first four measures have a half note 'm' above and a half note 'i' below. The next four measures have a half note 'm' above and a half note 'i' below. The final measure has a half note 'm' above and a half note 'i' below. The piece ends with a double bar line and repeat signs.

No. 58

Handwritten musical notation for exercise No. 58. It is in treble clef, common time (C), and consists of 8 measures. The first four measures have a half note 'm' above and a half note 'i' below. The next four measures have a half note 'm' above and a half note 'i' below. The final measure has a half note 'm' above and a half note 'i' below. The piece ends with a double bar line and repeat signs.

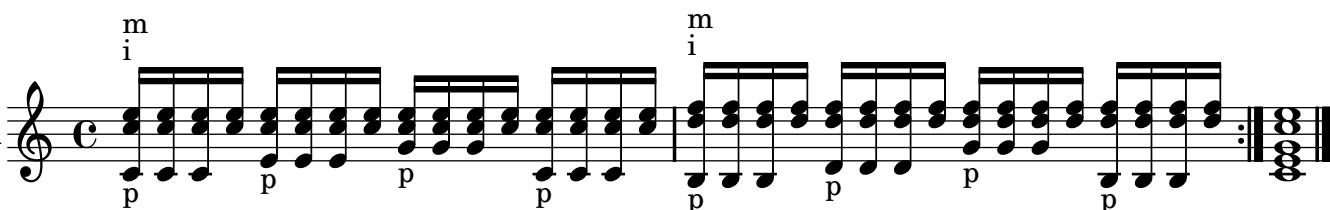
No. 59

Handwritten musical notation for exercise No. 59. It is in treble clef, common time (C), and consists of 8 measures. The first four measures have a half note 'm' above and a half note 'i' below. The next four measures have a half note 'm' above and a half note 'i' below. The final measure has a half note 'm' above and a half note 'i' below. The piece ends with a double bar line and repeat signs.

No. 60

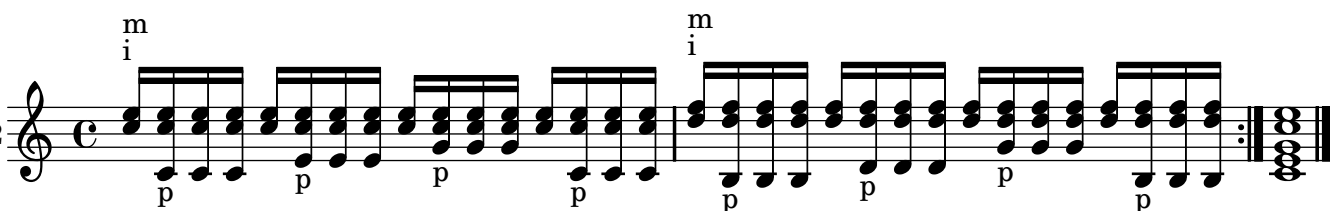
Handwritten musical notation for exercise No. 60. It is in treble clef, common time (C), and consists of 8 measures. The first four measures have a half note 'm' above and a half note 'i' below. The next four measures have a half note 'm' above and a half note 'i' below. The final measure has a half note 'm' above and a half note 'i' below. The piece ends with a double bar line and repeat signs.

No. 61



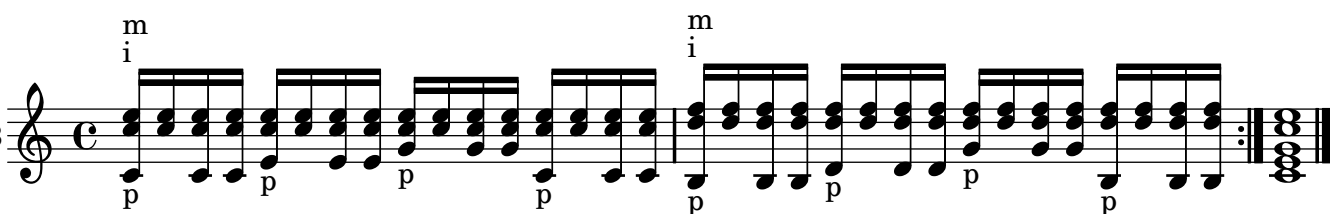
Handwritten musical score for No. 61. The piece is in C major, 2/4 time. It consists of two measures of eighth-note chords (C4-E4-G4, C4-E4-G4, F4-A4-C5, F4-A4-C5) followed by a repeat sign and a final double bar line. The first measure is marked with a 'p' (piano) dynamic. The second measure is marked with a 'p' (piano) dynamic. The key signature is one sharp (F#).

No. 62



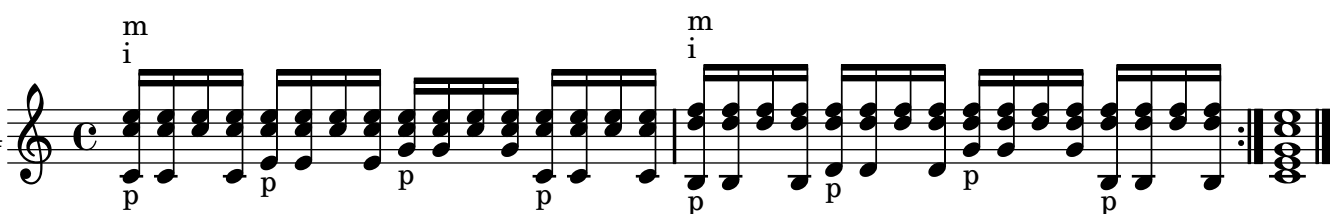
Handwritten musical score for No. 62. The piece is in C major, 2/4 time. It consists of two measures of eighth-note chords (C4-E4-G4, C4-E4-G4, F4-A4-C5, F4-A4-C5) followed by a repeat sign and a final double bar line. The first measure is marked with a 'p' (piano) dynamic. The second measure is marked with a 'p' (piano) dynamic. The key signature is one sharp (F#).

No. 63



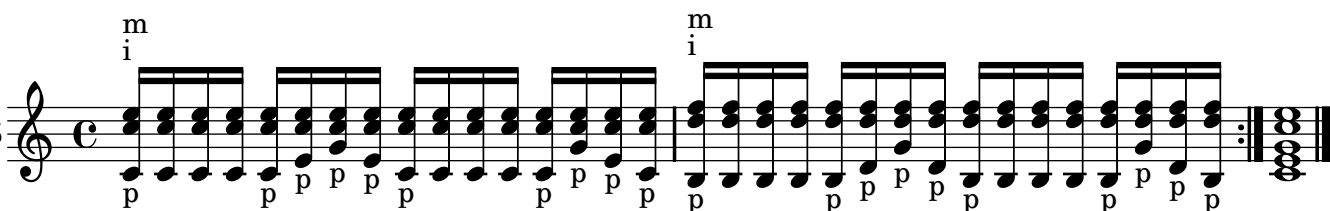
Handwritten musical score for No. 63. The piece is in C major, 2/4 time. It consists of two measures of eighth-note chords (C4-E4-G4, C4-E4-G4, F4-A4-C5, F4-A4-C5) followed by a repeat sign and a final double bar line. The first measure is marked with a 'p' (piano) dynamic. The second measure is marked with a 'p' (piano) dynamic. The key signature is one sharp (F#).

No. 64



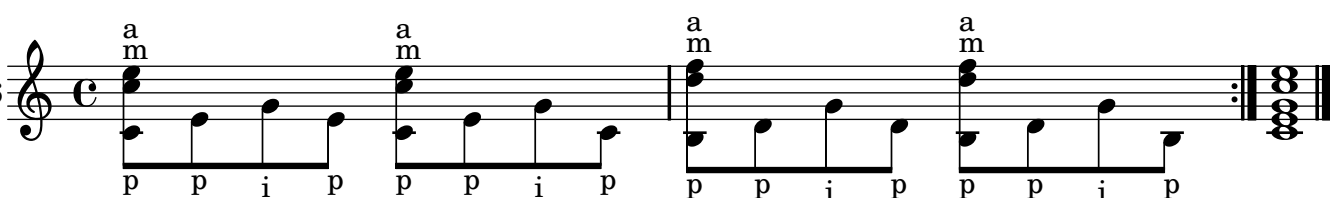
Handwritten musical score for No. 64. The piece is in C major, 2/4 time. It consists of two measures of eighth-note chords (C4-E4-G4, C4-E4-G4, F4-A4-C5, F4-A4-C5) followed by a repeat sign and a final double bar line. The first measure is marked with a 'p' (piano) dynamic. The second measure is marked with a 'p' (piano) dynamic. The key signature is one sharp (F#).

No. 65



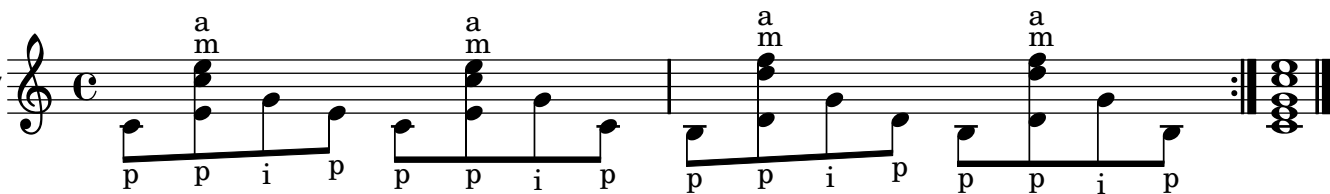
Handwritten musical score for No. 65. The piece is in C major, 2/4 time. It consists of two measures of eighth-note chords (C4-E4-G4, C4-E4-G4, F4-A4-C5, F4-A4-C5) followed by a repeat sign and a final double bar line. The first measure is marked with a 'p' (piano) dynamic. The second measure is marked with a 'p' (piano) dynamic. The key signature is one sharp (F#).

No. 66



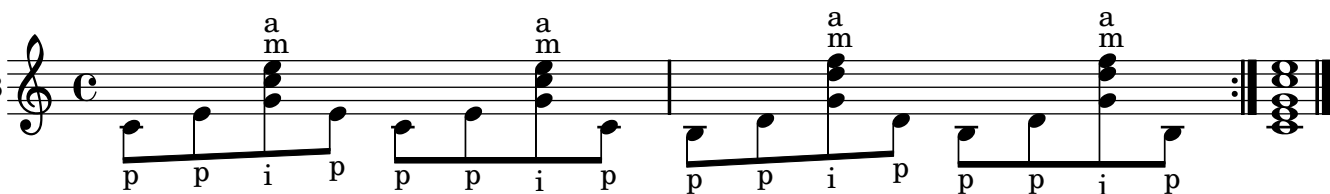
Handwritten musical score for No. 66. The piece is in C major, 2/4 time. It consists of two measures of eighth-note chords (C4-E4-G4, C4-E4-G4, F4-A4-C5, F4-A4-C5) followed by a repeat sign and a final double bar line. The first measure is marked with a 'p' (piano) dynamic. The second measure is marked with a 'p' (piano) dynamic. The key signature is one sharp (F#).

No. 67



Handwritten musical score for No. 67. The piece is in C major, 2/4 time. It consists of two measures of eighth-note chords (C4-E4-G4, C4-E4-G4, F4-A4-C5, F4-A4-C5) followed by a repeat sign and a final double bar line. The first measure is marked with a 'p' (piano) dynamic. The second measure is marked with a 'p' (piano) dynamic. The key signature is one sharp (F#).

No. 68



Handwritten musical score for No. 68. The piece is in C major, 2/4 time. It consists of two measures of eighth-note chords (C4-E4-G4, C4-E4-G4, F4-A4-C5, F4-A4-C5) followed by a repeat sign and a final double bar line. The first measure is marked with a 'p' (piano) dynamic. The second measure is marked with a 'p' (piano) dynamic. The key signature is one sharp (F#).

No. 69

a m
p p i p p p i p p p i p

No. 70

a m
p p i p p p i p p p i p

No. 71

a m
p p i p p p i p p p i p

No. 72

a m
p p i p p p i p p p i p

No. 73

a m
p p i p p p i p p p i p

No. 74

a m
p p i p p p i p p p i p

No. 75

a m
p p i p p p i p p p i p

No. 76

a m
p p i p p p i p p p i p

No. 77

a m
p p i p p p i p p p i p

No. 78

a m
p p i p p p i p p p i p p p i p

No. 79

a m
p p i p p p i p p p i p p p i p

No. 80

a m
p p i p p p i p p p i p p p i p

No. 81

i m i
p p p p p p p p

No. 82

m i m
p p p p p p p p

No. 83

i m i a i m i
p p p p p p p p

No. 84

m i m a m i m
p p p p p p p p

No. 85

i a i i a i
p p p p p p p p

No. 86

Handwritten fingering: a i m, a i m, a i m, a i m.

No. 87

Handwritten fingering: i m a, i m a, i m a, i m a.

No. 88

Handwritten fingering: a m i, a m i, a m i, a m i.

No. 89

Handwritten fingering: i m a m i i, i m a m i i, i m a m i i, i m a m i i.

No. 90

Handwritten fingering: a m i, i m a, i m a, i m a.

No. 91

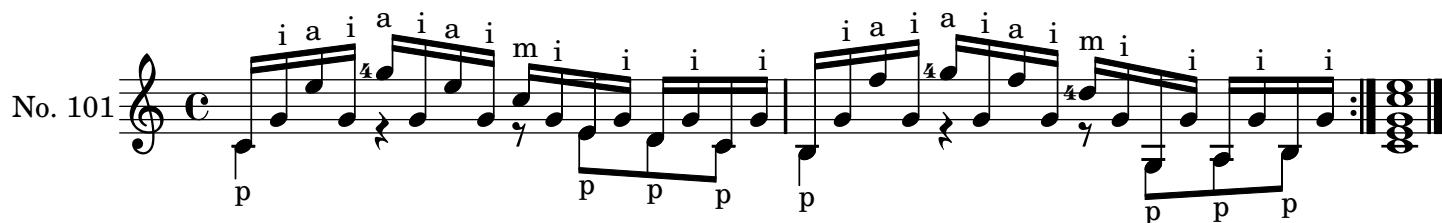
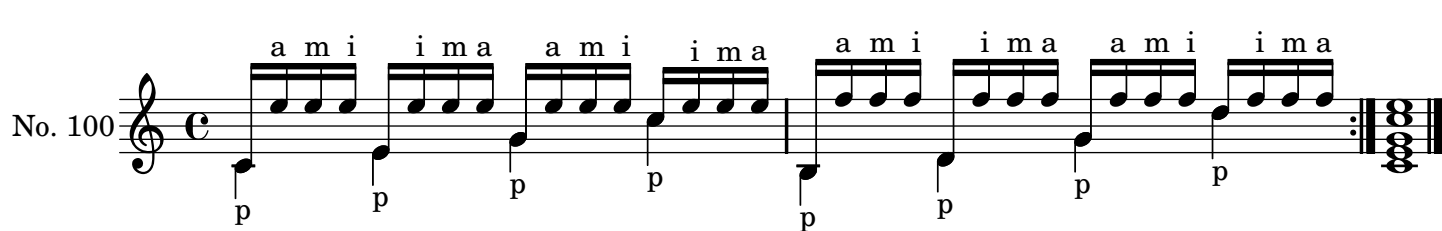
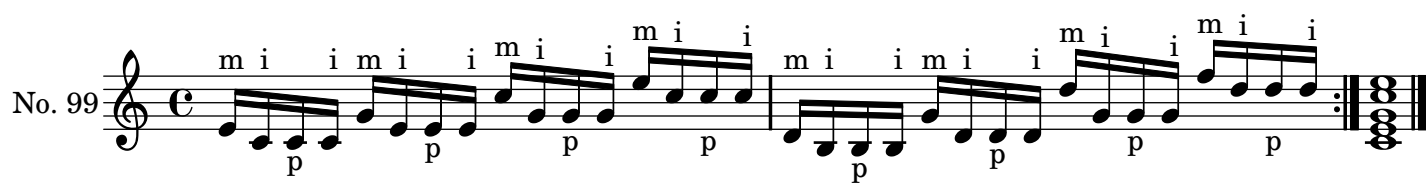
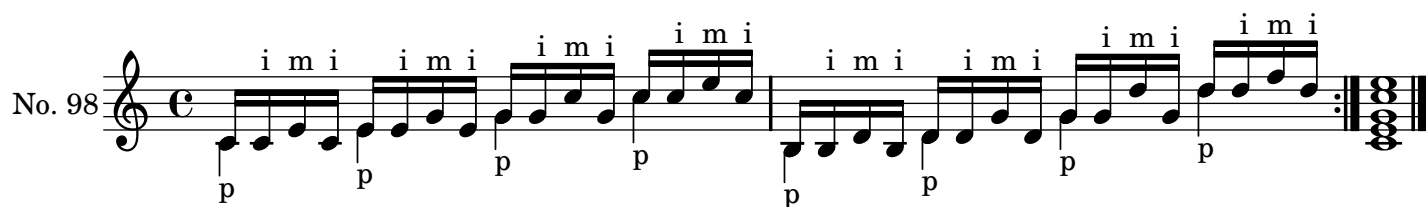
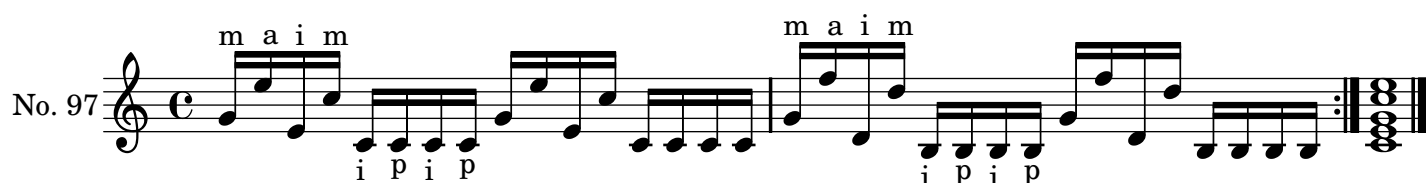
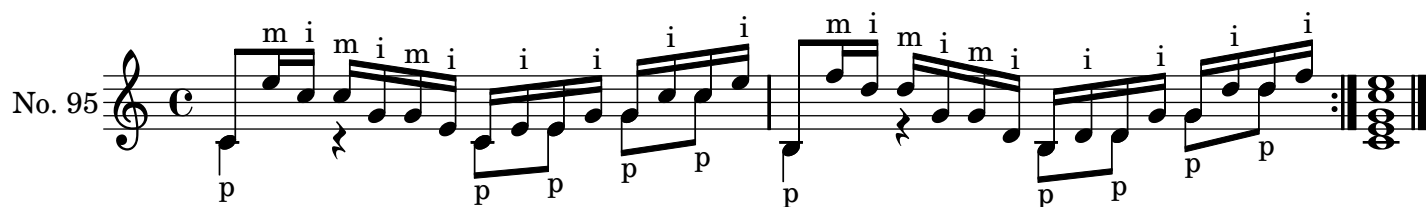
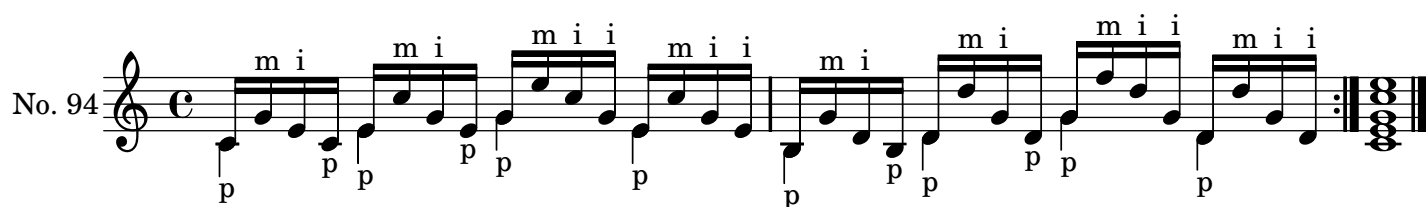
Handwritten fingering: m a m, i m i, i m i, i m i.

No. 92

Handwritten fingering: i m a, i m a, i m a, i m a.

No. 93

Handwritten fingering: a m i, a m i, a m i, a m i.



No. 102

Handwritten musical score for No. 102. The piece is in common time (C) and begins with a treble clef. The melody consists of eighth and sixteenth notes, with slurs and accents. Fingerings are indicated by letters 'i', 'm', 'a' above the notes. The bass line consists of quarter notes, mostly on a single pitch, with 'p' (piano) markings. The piece ends with a double bar line and repeat dots.

No. 103

Handwritten musical score for No. 103. The piece is in common time (C) and begins with a treble clef. The melody features eighth and sixteenth notes with slurs and accents. Fingerings 'i', 'm', 'a' are shown. The bass line has quarter notes with 'p' markings. The piece concludes with a double bar line and repeat dots.

No. 104

Handwritten musical score for No. 104. The piece is in common time (C) and begins with a treble clef. The melody includes eighth and sixteenth notes with slurs and accents. Fingerings 'i', 'a', 'm' are indicated. The bass line features quarter notes with 'p' markings. The piece ends with a double bar line and repeat dots.

No. 105

Handwritten musical score for No. 105. The piece is in common time (C) and begins with a treble clef. The melody consists of eighth and sixteenth notes with slurs and accents. Fingerings 'i', 'a', 'm' are shown. The bass line has quarter notes with 'p' markings. The piece concludes with a double bar line and repeat dots.

No. 106

Handwritten musical score for No. 106. The piece is in common time (C) and begins with a treble clef. The melody is composed of quarter notes with slurs and accents. Fingerings 'a', 'm' are indicated. The bass line consists of eighth notes with 'p' and 'i' (finger) markings. The piece ends with a double bar line and repeat dots.

No. 107

Handwritten musical score for No. 107. The piece is in common time (C) and begins with a treble clef. The melody features eighth and sixteenth notes with slurs and accents. Fingerings 'a', 'm' are shown. The bass line has eighth notes with 'p' and 'i' markings. The piece concludes with a double bar line and repeat dots.

No. 108

Handwritten musical score for No. 108. The piece is in common time (C) and begins with a treble clef. The melody includes eighth and sixteenth notes with slurs and accents. Fingerings 'a', 'm' are indicated. The bass line features eighth notes with 'p' and 'i' markings. The piece ends with a double bar line and repeat dots.

No. 109

Handwritten musical score for No. 109. The piece is in common time (C) and begins with a treble clef. The melody consists of eighth and sixteenth notes with slurs and accents. Fingerings 'm', 'i' are shown. The bass line has quarter notes with 'p' markings. The piece concludes with a double bar line and repeat dots.

No. 110

i m i i m i i m i

4 3 2 3 3 3 3

p p p p p p p

No. 111

m m a m m a a a m a a m

2 2 3 2 3 2 3 4

p p i p p i p p i p p i p p i p p i

No. 112

a m a m a m a m

3 2 3 2 3 2 3 3

p i p p i p p i p p i p p i p

No. 113

a m a m a m a m

2 3 2 3 2 3 2 3

p p p p p p p i p p p

*

No. 114

a m m i a m m i a m m i a m m i

2 2 2 2 2 2 2 2

p p p p p p p p

*

No. 115

a m i a m i i a m i a m i i a m i a m i i a m i a m i i

4 3 3 3 3 3 3 3

p p p p p p p p

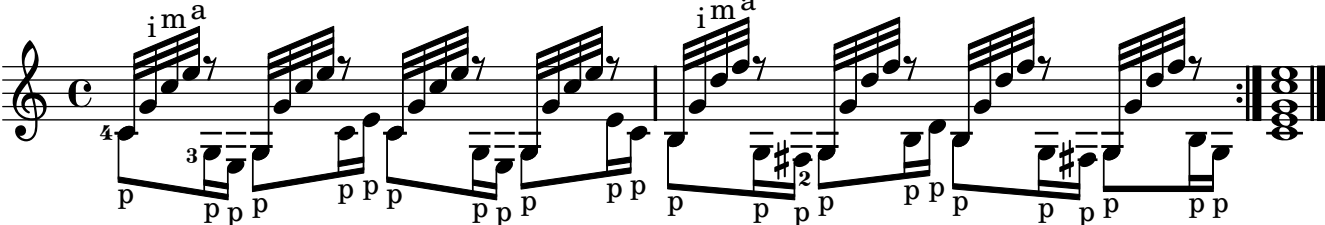
No. 116

a m i i m a a m i i m a a m i i m a a m i i m a

4 3 3 3 3 3 3 3

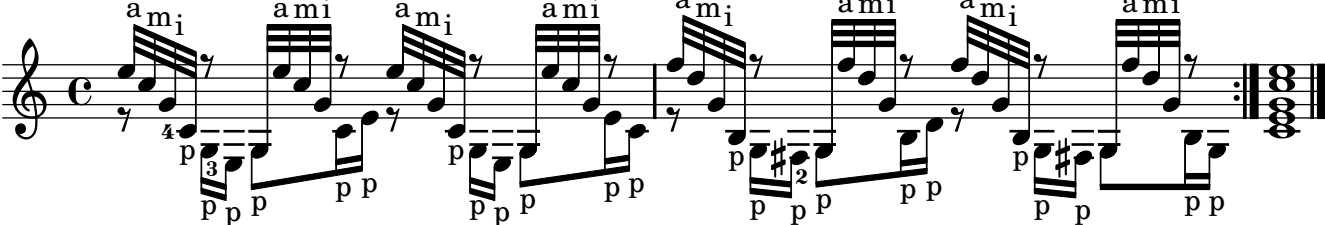
p p p p p p p p

No. 117



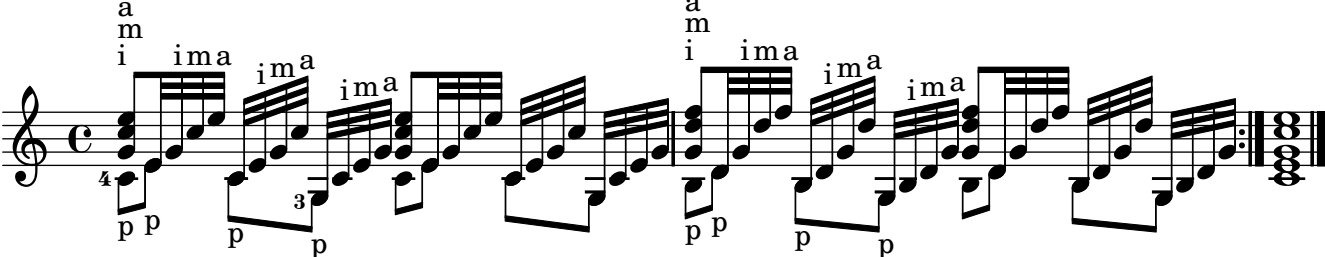
Handwritten musical score for No. 117. The piece is in common time (C) and 4/4. The melody is written on a single staff with a treble clef. It features a series of eighth-note runs, often beamed in groups of four. The bass line is written on a single staff with a bass clef, featuring a series of eighth-note runs, often beamed in groups of four. The piece ends with a double bar line and a repeat sign. The key signature has one sharp (F#).

No. 118



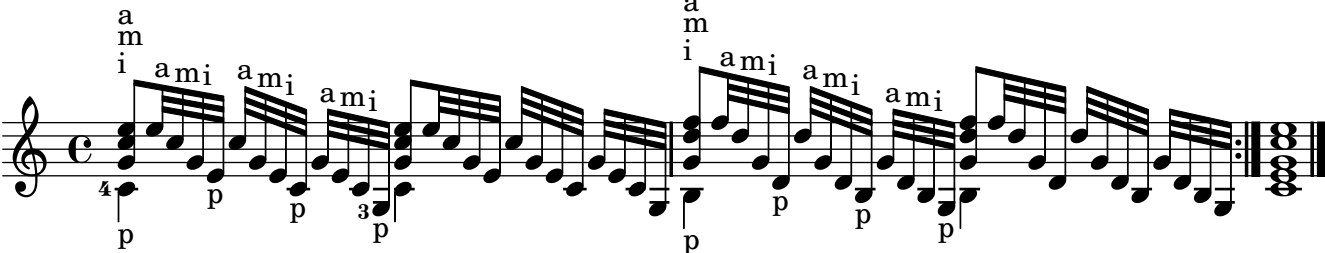
Handwritten musical score for No. 118. The piece is in common time (C) and 4/4. The melody is written on a single staff with a treble clef. It features a series of eighth-note runs, often beamed in groups of four. The bass line is written on a single staff with a bass clef, featuring a series of eighth-note runs, often beamed in groups of four. The piece ends with a double bar line and a repeat sign. The key signature has one sharp (F#).

No. 119



Handwritten musical score for No. 119. The piece is in common time (C) and 4/4. The melody is written on a single staff with a treble clef. It features a series of eighth-note runs, often beamed in groups of four. The bass line is written on a single staff with a bass clef, featuring a series of eighth-note runs, often beamed in groups of four. The piece ends with a double bar line and a repeat sign. The key signature has one sharp (F#).

No. 120



Handwritten musical score for No. 120. The piece is in common time (C) and 4/4. The melody is written on a single staff with a treble clef. It features a series of eighth-note runs, often beamed in groups of four. The bass line is written on a single staff with a bass clef, featuring a series of eighth-note runs, often beamed in groups of four. The piece ends with a double bar line and a repeat sign. The key signature has one sharp (F#).